



## Victoria Falls and Chobe

6 days/5 nights

Incorporating:

2 nights Victoria Falls Zimbabwe, 3 nights Chobe National Park

### Trip Summary

- Day 1 Pick up **Victoria Falls Airport** and transfer to **Victoria Falls Safari Lodge/Ilala Lodge**  
overnight lodge (B&B)
- Day 2 **Victoria Falls**. (activities not included)  
overnight lodge (B&B)
- Day 3 Pick up **Victoria Falls** and transfer to **Chobe National Park**  
overnight camping (FI)
- Day 4 Explore **Chobe** 4x4 game drives  
overnight camping (FI)
- Day 5 Explore **Chobe** 4x4 game drives and PM boat cruise  
overnight camping (FI)
- Day 6 Transfer back to **Kasane** from **Chobe** for your onward travel arrangements.



### Itinerary available at all our camping levels

Start Victoria Falls End: Kasane.  
Transport: closed vehicle, open 4x4.  
Accommodation: Victoria Falls Safari lodge or Ilala and camping.

#### **Notes:**

We can do a similar itinerary including Livingstone instead of Victoria Falls  
All itineraries can be adjusted to you specifications  
Single Supplements Apply



For your customized safari contact us at

Phone:++267 6250 259 Mail: [reservations@sgsafrica.com](mailto:reservations@sgsafrica.com) , web: [www.sgsafrica.com](http://www.sgsafrica.com); blog:[www.africasafarisgsblog.com](http://www.africasafarisgsblog.com) Skype: sgs.africa



## Victoria Falls and Chobe

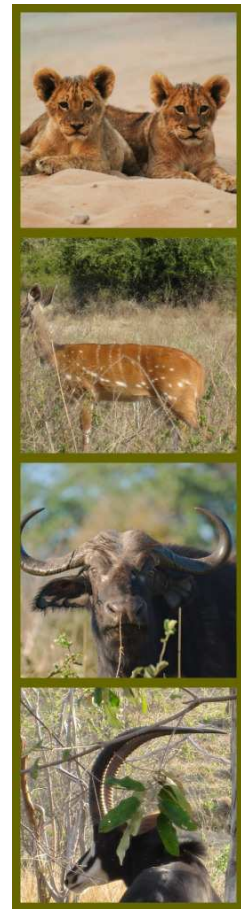
6 days/5 nights

Incorporating:

2 nights Victoria Falls Zimbabwe, 3 nights Chobe National Park

### Victoria Falls, Zimbabwe Day 1-2 (B&B)

Clients will be met at Victoria Falls airport and transferred to Victoria Falls Safari Lodge. This beautiful lodge overlooks a private water hole and has a great restaurant and bar as well as swimming pool for cooling off after exploring Victoria Falls. Mopane/Acacia clients will be transferred to Ilala lodge in the heart of Victoria Falls. Clients can visit one of the largest waterfalls in the world. Tumbling cascades of water that throw moisture far into the air ensure a cool walk through the bush and breathtaking views of the Falls. Victoria Falls is also home to a myriad of activities for the energetic traveler or for those who just want to relax, including bungee jumping, white water rafting, boat cruises and African market shopping. (All activities at additional cost)



### Chobe National Park Day 3-5 (FI)

In the morning on Day 3 you will be driven from Victoria Falls Safari Lodge or Ilala to the Botswana Kazungula border a journey that takes approximately 1 hour. Here you will be met by the SGS Africa team to begin your mobile safari. You will meet your guide who will then drive you into Chobe National Park in your private 4x4 open vehicle. Enjoy a cold drink and a light packed lunch on the way. You will arrive in camp in the afternoon where you can either relax and enjoy your new surroundings or proceed on a short game drive and a sundowner near the Chobe river. On Day 4 there will be an early wake up call followed by a light continental breakfast before you leave in a morning game drive to track animals large and small. You will return to camp, depending on what you find, for a light lunch/brunch. After this you can relax in camp and enjoy a siesta before heading off again in the afternoon around 3pm for another game drive before returning to camp for a hot bush shower and a meal under the stars in the evening. On Day 5 enjoy an early morning game drive and an afternoon boat cruise on the Chobe before game driving back to your camp for a bush dinner under the stars. Along the Chobe riverfront the terrain is that of a typical riverine ecosystem. Away from the river we have mixed miombo and broadleaved woodland that harbours rich avifauna. Northern Chobe is famous for its huge elephant & buffalo herds, puku, kudu, Chobe bushbuck and hippo as well as diverse bird life. One could also hope to see: lion, leopard, wild dog, giraffe, waterbuck, zebra, impala.

### Day 6

Transfer by road back to Kasane for your onward travel arrangements.

**Please contact us for a quote for this itinerary at the camping level that would best suit your requirements.**

**See <http://www.sgsafrica.com/mobile-safaris> for a full description of our 4 great camping options.**

For your customized safari contact us at

Phone: ++267 6250 259 Mail: [reservations@sgsafrica.com](mailto:reservations@sgsafrica.com), web: [www.sgsafrica.com](http://www.sgsafrica.com); blog: [www.africasafarisgsblog.com](http://www.africasafarisgsblog.com) Skype: sgs.africa