



Botswana Odyssey

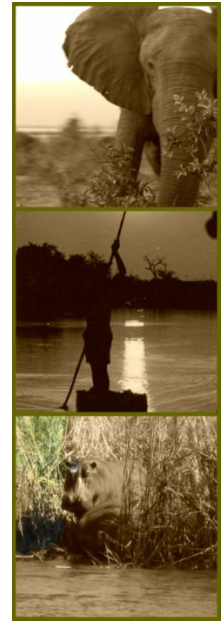
10 days/9 nights

Incorporating:

3 nights Nxai Pan, 3 nights Khwai Moremi, 3 nights Okavango Delta

Trip Summary

- Day 1 Pick up **Maun** and begin safari in **Nxai Pan**
overnight camping
- Day 2 Explore **Nxai Pan**- visit famous **Baines Baobabs**
overnight camping
- Day 3 Explore **Nxai Pan**
overnight camping
- Day 4 Drive from **Nxai** to **Moremi Khwai** region.
(Full day drive with resupply stop in Maun)
overnight camping
- Day 5 Explore **Moremi**
overnight camping
- Day 6 Explore **Moremi**
overnight camping
- Day 7 Drive from **Moremi Game Reserve** to **Okavango Delta**
(Approximately 4 hours drive in National Park)
overnight camping
- Day 8 Explore **Okavango Delta**
overnight camping
- Day 9 Explore **Okavango Delta-Mokoro day trip**
overnight camping
- Day 10 Drive from **Okavango Delta** to **Maun**
For onward arrangements (Approximately 4 to 5 hours drive)



Start Maun End Maun.

If starting in Maun clients must be available for pick up before 1pm.

Activities: Game Drives, full day mokoro

Transport: open 4x4

Accommodation: camping.

Min 2 ppl Mopane/min 4 ppl Acacia

Notes:

All itineraries can be adjusted to your specifications.

Boat cruise can be added in the Delta at additional cost

Single Supplements Apply



For your customized safari contact us at

Phone:++267 6250 259 Mail: reservations@sgsafrica.com web: www.sgsafrica.com blog: www.africasafari.org.sg/blog Skype: sgs.africa



Botswana Odyssey

10 days/9 nights

Incorporating:

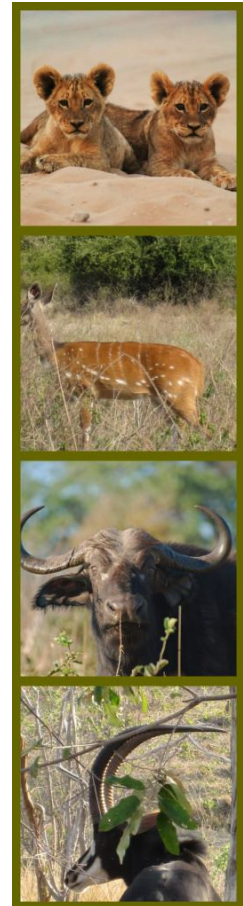
3 nights Nxai Pan , 3 nights Khwai Moremi, 3 nights Okavango Delta

Nxai Pan Day 1-3 (FI):

On Day 1 meet the SGS Africa team and drive to Nxai Pan National Park. You will stop at the shop to purchase the drinks you wish to have on your safari in Maun. Enjoy 2 days exploring the routes which the old explorers took. Perhaps the focal point of Nxai Pan is the waterhole, situated only two kilometres from the entrance gate, in the midst of a large grassy plain which is dotted with a few clumps of short umbrella thorn trees. Here, and within the mopane woodland, lion, giraffe, kudu, impala, ostrich, a fascinating birdlife, together with a good population of jackal, bat-eared fox and numerous smaller creatures, are permanent residents. Another famous point of interest is Baines Baobabs which were named after the famous painter and explorer of the last century Thomas Baines, who painted this unusual group of baobabs in 1862 during his journeys through Southern Africa. The seven giant trees dominate a small island on the edge of the open grassless Kudiakam Pan.

Moremi Day 4-6 (FI):

On Day 4 you will have a full day drive into the Moremi Game Reserve with stops on the way for a packed lunch and to stretch legs. There will also be a stop in Maun for a resupply and to purchase any additional drinks. While the staff set up the new camp in Khwai clients can enjoy a sundowner in their new surroundings. On Day 5 and 6 you have 2 whole days to explore Moremi Game Reserve Khwai region. Moremi is the protected extension of the Okavango Delta and offers a typical wetland system with grassy plains and pans surrounded by well-developed mopane forests and riverine woodland. Huge breeding herds of elephant are common as are lechwe, waterbuck, impala, hippos. One can also hope to see buffalo, giraffe, bushbuck, lion, wild dog, leopard, cheetah, black-backed and side-striped jackal, zebra, wildebeest, tsessebe, bush babies, fruit bats, sable, kudu, roan, steenbok, duiker, honey badger. The birdlife includes water birds as well as dry land birds



For your customized safari contact us at

Phone: ++267 6250 259 Mail: reservations@sgsafrica.com web: www.sgsafrica.com blog: www.africasafarisgsblog.com Skype: [sgs.africa](https://www.skype.com/name/sgs.africa)



Botswana Odyssey

10 days/9 nights

Incorporating:

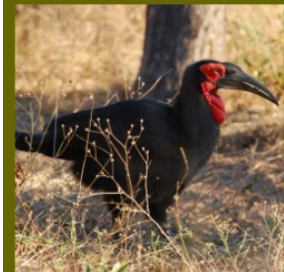
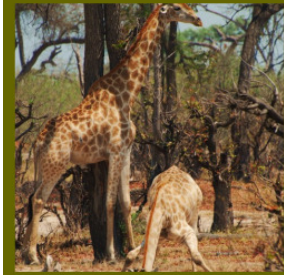
3 nights Nxai Pan, 3 nights Khwai Moremi, 3 nights Okavango Delta

Okavango Delta Day 7-9 (FI):

On Day 7 drive from Khwai region into the Okavango Delta to explore a different region of Moremi Game Reserve's diverse eco system for 2 days. This part of Okavango is typical wetland and the scenery varies from grassy flood plains dotted with large termite mounds to well developed mopane forests and riverine woodland; from meandering streams to large open lagoons; from small islands fringed with palms to larger islands with riparian forests of sausage and ebony trees. The Okavango Delta's beauty is beyond compare. There are additional options to do a boat cruise or mokoro trip for a half or whole day while in the Delta. (Cost of water based activities in the Delta not included)

Day 10

Depart early morning for Maun for your onward travel arrangements. Approximately a 4 hour drive from your camping area in the Delta.



For your customized safari contact us at

Phone:++267 6250 259 Mail:reservations@sgsafrica.com .web: www.sgsafrica.com blog:www.africasafarisgsblog.com Skype: sgs.africa



Botswana Odyssey

10 days/9 nights

Incorporating:

3 nights Nxai Pan, 3 nights Khwai Moremi, 3 nights Okavango Delta

Included Mopane Level Camping:

- 4x4 game drives
- Walk-in tents (2,5 x 2,5 m) with built-in floors, mosquito gauze on door and windows
- Small shaded front verandah with door mats
- Camp beds with thin (80 mm / 3 in) mattresses (in a bedroll to keep bedding dust proof when moving camp)
- Full linen (1 pillow, pillow case, sheets, duvet, duvet cover, towels & 1 x light extra blanket)
- Toiletries: (toilet paper only)
- **Shared shower (private portable shower filled on request with hot water by camp staff) or shower in public camp site**
- **Shared bush toilet (toilet seat over a pre-dug pit with ash to fill in as you go) or toilets in public camp sites**
- Wash stands outside tent - one per tent - filled with hot water every morning
- Gazebo – used at the discretion of the staff to provide shade & protection from the wind & rain
- Dining table & stools
- Tableware: table cloths & paper napkins, durable melamine crockery, cutlery
- Two course meals throughout
- **Limited Bar: filtered/bottled water, boxed wine & cordials (we can take clients to a shop to purchase additional drinks before we depart on safari)**
- Experienced licensed guide
- Limited staff complement to help with camp chores
- **Staff may travel with guests in same vehicle**
- Guests could be asked to assist the guide or staff with occasional camp chores such as collecting firewood or water, packing up camp, etc
- Open game drive vehicles with shade roof, game viewing seats & long range fuel tanks
- Seat 10 pax (3 per seat) plus driver/guide
- Game drive vehicle pulls trailer with all camping equipment
- Luggage space is restricted to approx 15 kg per person
- 4x4 game drives
- Usually 2 activities per day
- Park entry and camping fees
- Government taxes & levies
- Road levies
- Public liability
- Medical kit
- Limited reference library

Excluded Mopane Level Camping

- International flights
- Any lodge accommodation or meals not specified
- Any transfers & excursions not specified
- Travel, cancellation & medical insurance
- Charter flights
- Specialist guides
- Private or en suite ablutions
- Extras: flash lights & batteries, thermos water bottle & mugs, hot water bottle in winter, plastic rain coats or umbrellas in summer
- Linen (x-tra blankets & pillows, towels, face cloth, change of linen during safari)
- Toiletries: (soap, hand cream, mosquito repellent, sun block, mirror, tissues)
- Drinks: beer, alcoholic beverages, bottled wine, mixers, soft drinks
- Laundry
- Visas
- Airport departure taxes
- Tips & gratuities for guides and camp staff



Botswana Odyssey

10 days/9 nights

Incorporating:

3 nights Nxai Pan, 3 nights Khwai Moremi, 3 nights Okavango Delta

Included Acacia Level Camping:

- Walk-in tents (2, x 2 m) with built-in floors, mosquito gauze on door and windows
- Small shaded front verandah with door mats
- **Ground mattresses, Sleeping bag**, 1 pillow, pillow case, 1 x light extra blanket in winter months.
- Toiletries: (toilet paper only)
- **Shared shower (private portable shower filled on request with hot water by camp staff) or shower in public camp site**
- **Shared bush toilet (toilet seat over a pre-dug pit with ash to fill in as you go) or toilets in public camp sites**
- Wash stands outside tent - one per tent - filled with hot water every morning
- Dining table & stools
- Tableware: table cloths & paper napkins, durable melamine crockery, cutlery
- Basic camping two course meals throughout
- **Limited Bar: filtered water and cordials**
- Limited staff complement to help with camp chores
- Staff may travel with guests in same vehicle
- Guests could be asked to assist the guide or staff with occasional camp chores such as collecting firewood or water, packing up camp, etc
- Open game drive vehicles with shade roof, game viewing seats & long range fuel tanks
- **Seats 10 pax** (3 per seat) plus driver and one client in front
- Game drive vehicle pulls trailer with all camping equipment
- Luggage space is restricted to approx 15 kg per person
- 4x4 game drives
- Usually 2 activities per day
- Park entry and camping fees
- Government taxes & levies
- Road levies
- Public liability
- Medical kit
- Limited reference library

Excluded Acacia Level Camping:

- International flights
- Travel, cancellation & medical insurance
- **Private or en suite ablutions**
- Extras: flash lights & batteries, thermos water bottle & mugs, hot water bottle in winter, plastic rain coats or umbrellas in summer
- Linen (x-tra blankets & pillows, towels, face cloth, change of linen during safari)
- Toiletries: (soap, hand cream, mosquito repellent, sun block, mirror, tissues)
- **Drinks: beer, alcoholic beverages, bottled wine, mixers. We take your group to shop for these additional drinks before we depart on safari.**
- Laundry
- Visas
- Airport departure taxes
- Tips & gratuities for guides and camp staff